

# 2022 Annual Report

*"A Year of Putting the Pieces Together..."*





# A Message from the Director...

**Christena Beer, MPH, BSN, RN**

**Health Director | Miami County Health Department**

We are pleased to present the 2022 Miami County Health Department (MCHD) Annual Report, which is the first report of its kind, shared with the Miami County Board of Health and residents of Miami County, Kansas. This report outlines our renewed purpose and examines how priorities identified through strategic planning and program evaluation have been implemented to provide significant improvements to promote and protect the health and well-being of those who live, learn, work, and play in Miami County.

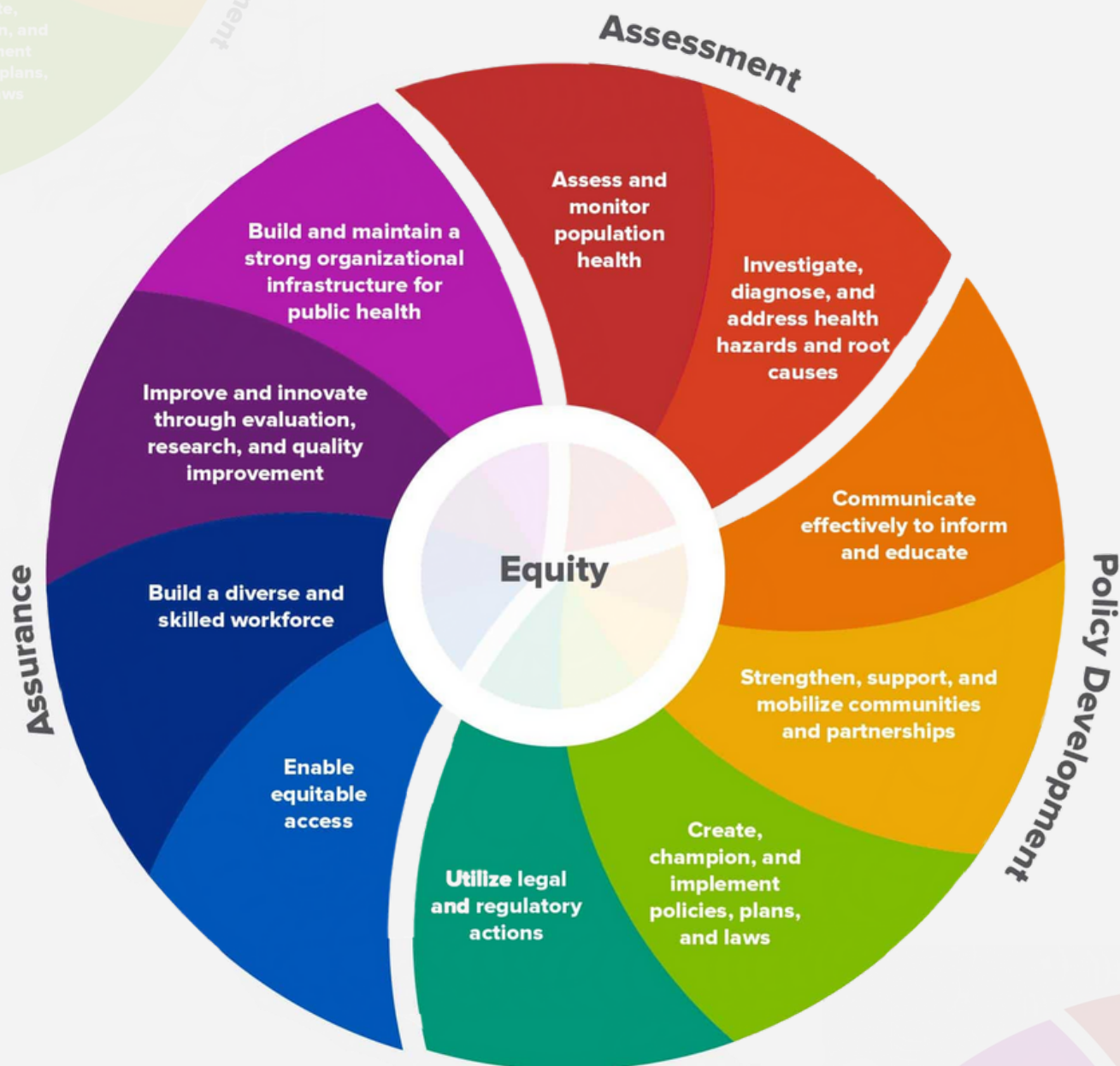
The last several years have encompassed significant change and adaptation for MCHD and its employees. The theme for this report is "A Year of Putting the Pieces Together..." Public Health is what we all do together as residents and communities to ensure the conditions necessary in which all can be healthy. COVID-19 showed us the importance of a mature, local public health system with an infrastructure that promotes health and strengthens the resiliency of our community systems. As we collaboratively and collectively moved past the deeply-immersed work tied to the pandemic response, I wanted to dedicate specific time in 2022 to perform a serious evaluation of our operational programs and services to understand better where we have been, where we currently are, and what we envision for public health in the future. Reading through the report, you will see that our work throughout the last year has focused on the expansion of programs and services, modernizing our public health infrastructure and emphasizing the prioritization of workforce development and communication planning.

The ongoing improvement efforts would not be possible without the support from the Miami County Administration, the Board of County Commissioners, and our other local, county and state partners. Thank you for being a partner to public health. Our hope is that we continue to deepen and broaden our partnerships to meet the needs of our community. In moving forward, our leadership and staff remain steadfast in our commitment to our vision of "Healthy People in a Healthy Community." I encourage anyone looking for up-to-date information about the ways they benefit from public health to follow us on social media or to visit our website. It remains my honor to serve the communities of Miami County, where my family and I live, learn, work, and play.

*-Christena*

# PUBLIC HEALTH IS...

## THE 10 ESSENTIAL PUBLIC HEALTH SERVICES

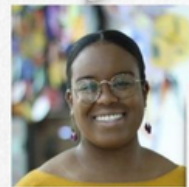
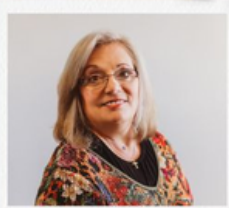


The 10 Essential Public Health Services provide a framework for public health to protect and promote the health of all people in all communities. To achieve optimal health for all, the Essential Public Health Services actively promote policies, systems, and services that enable good health and seek to remove obstacles and systemic and structural barriers, such as poverty, racism, gender discrimination, and other forms of oppression, that have resulted in health inequities. Everyone should have a fair and just opportunity to achieve good health and well-being.

*To protect and promote the health of all people in all communities*



# Meet the Team!



# Vision

*Healthy People in a Healthy Community*

# Mission

In an effort to achieve optimal health for all, our mission is to provide quality health services and resources for Miami County and surrounding communities through education and promotion.

# Culture

Teamwork & Collaboration

Upstream Mindset

Resiliency

Trust

Respect

Dedication

Recognition

# 46 YEARS OF SERVICE

---

## 8 CORE PROGRAMS



TO HELP YOU STAY WELL

# 2022 AT A GLANCE:

## MILESTONES & ACCOMPLISHMENTS

---

- Procured \$645,834 in federal & state grant funding to enhance programs, modernize infrastructure and to increase workforce capacity
- Reorganization of MCHD COVID-19 response plan
- MOU with KUMED, Dept. of Pop. Health- Academic Health Dept.
- MOU with MiCo Sheriff's Office- Cold Chain Mgmt. for vaccines
- Implementation of Electronic Health Record
- Implementation of Teletask (appt. reminder system)
- Implementation of DocuWare (cloud-based filing software)
- Increased monthly appt. availability by >400%
- Fee Schedule assessment & update
- Created fiscal management tool to track grant revenue/expenditures
- Updated/created 100+ forms, policies and Standard Operating Procedures
- Procured equipment and supplies for fit-testing and biometric screening
- Planned & hosted a Summer Safety Spectacular event

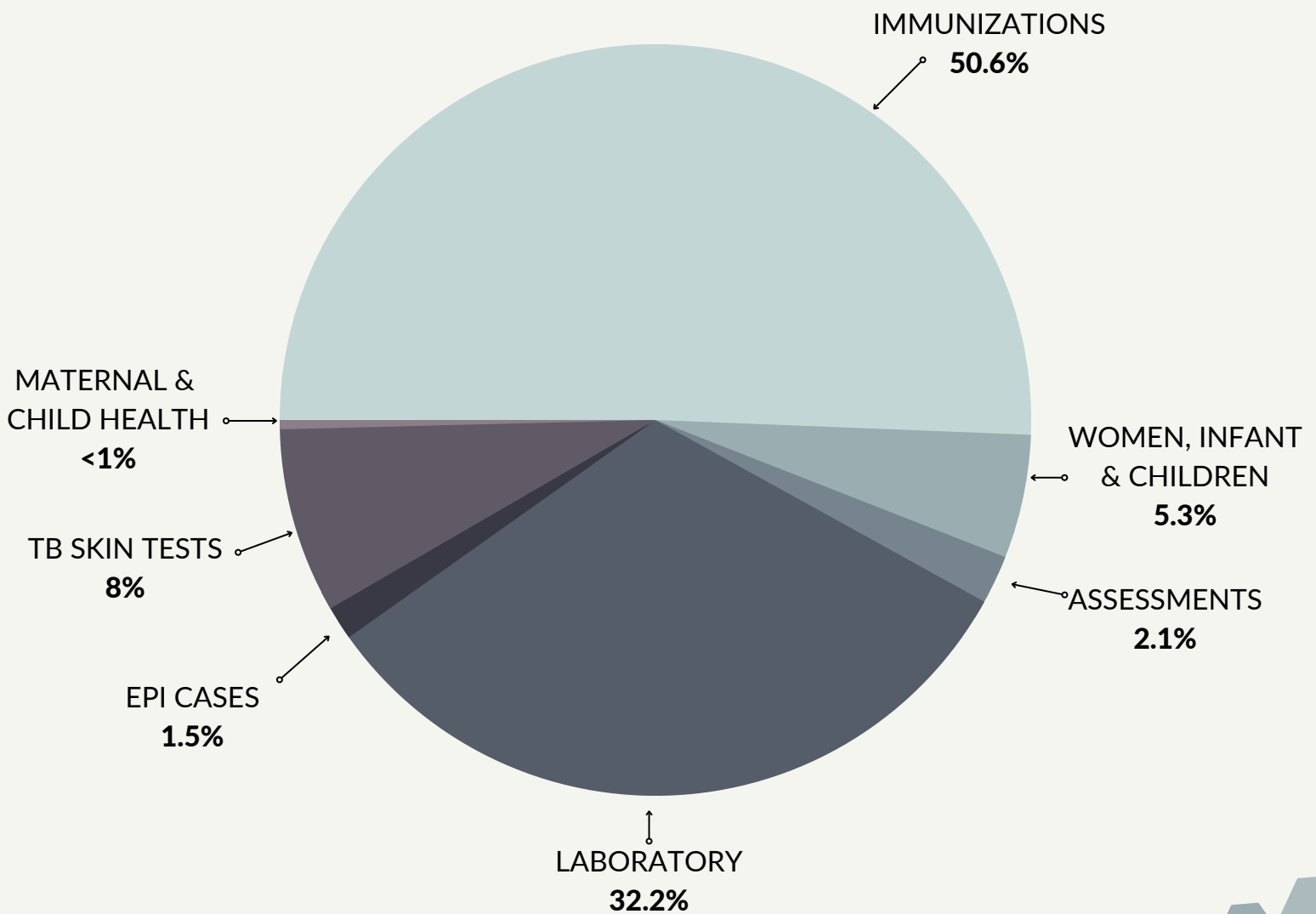
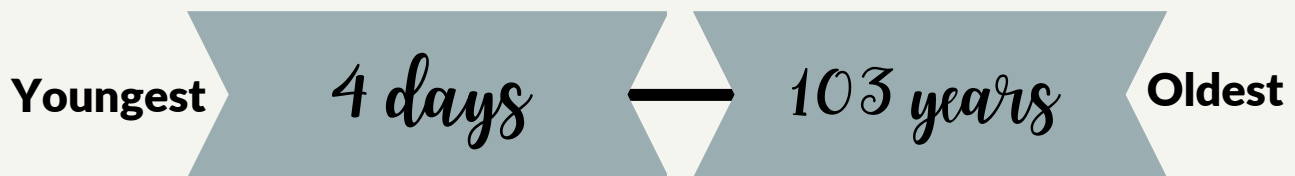


### Grant-funded project list & building/grounds enhancements:

- LED, building and directional signage
- Landscaping & drainage
- Flooring
- Interior/exterior painting
- Office & clinic furnishings- multipurpose workstations, storage, laboratory and diagnostic equipment, etc.

# 2022 AT A GLANCE:

## CLIENTS SERVED BY PROGRAM



# IMMUNIZATIONS

Vaccines have helped to prevent the spread of infectious diseases for years and as a result, have saved lives for over 100 years. Staying up-to-date on recommended vaccines will not only protect you and your loved ones, it also helps to prevent the spread of vaccine-preventable diseases in our communities. The effectiveness of vaccines can vary depending on disease outcome as well as the age and health of the person being vaccinated.

## Miami County Health Department offers the following vaccines:

- COVID-19
- Hepatitis A
- Hepatitis B
- HIB
- HPV
- Influenza
- Meningitis
- MMR
- Pneumonia
- Polio
- Rotavirus
- Shingles
- Tetanus, Diphtheria, & Pertussis
- Varicella

## Miami County Health Department Vaccine Initiatives

- Cocooning Project
  - Goal is to protect babies from Pertussis
- First Responder Vaccines & Considerations
  - Tetanus
  - Hepatitis A
  - Hepatitis B

# COMMUNITY HEALTH WORKER

In partnership with the Community Health Council, we proudly host a Community Health Worker, Carla Morales. Community Health Workers serve as a liaison between health and social services and the community to help improve access to quality care. They are tailored to meet the needs of the communities they serve.

Carla is a bilingual Maternal Community Health Worker who focuses on the maternal population by helping individuals and families navigate healthcare systems and by providing education, resources, and referrals.

Carla is a Certified Car Seat Technician, Safe Sleep Instructor, and can provide Becoming-a-Mom classes, Home Health Aide training, Chronic Disease Self-Management training and education, and is certified to provide the National Diabetes Prevention Program training.



# EPIDEMIOLOGY

Epidemiology staff work to prevent and control the spread of infectious diseases. The program monitors the incidence of reportable communicable diseases in the county, conducts case investigations, contact tracing, and recommends/provides immunization and immune-globulin to residents. This program also provides preventative education and counseling to high-risk populations and health care for evaluation, limited treatment, and follow-up. This program includes the Rabies Control Program, Tuberculosis (TB) Control Program, Disease Investigation & Containment Program, and part of the Sexually Transmitted Disease (STD) Program.

During Fiscal Year 2021-2022, Epidemiology staff attended the Kansas Infectious Disease Symposium (KIDS) for continuing education on Tuberculosis, Multi-drug Resistant Organisms (MDROs), COVID-19, mental health during a pandemic, HIV and other emerging threats.

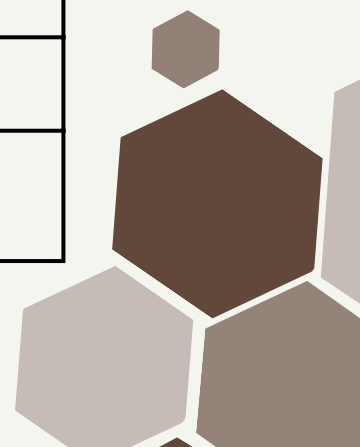
## 2022 Cumulative Case Counts for Residents of Miami County, Kansas



Campylobacteriosis	15
Carbapenemase-Producing Organisms (CPO)	2
Ehrlichiosis	2
Haemophilus influenzae, invasive disease	1
Hepatitis A	1
Hepatitis C, chronic	4
Invasive pneumococcal disease	2
Salmonellosis	1
Sars-COV2 (COVID-19)	3885
Spotted fever rickettsiosis	1
Sensitive Diseases (Chlamydia, Gonorrhea, Syphilis, Tuberculosis, Latent/Active)*	117

\*Data represented by cases identified from 01/02/2022-12/31/2022

\*Case counts include those that meet the confirmed and probable case definitions





# PUBLIC HEALTH EMERGENCY PREPAREDNESS



We provide leadership to protect the health of Kansans through efforts to mitigate, prepare for, respond to, and recover from disasters, infectious disease, terrorism, and mass-casualty emergencies.

## RESPONSIBILITIES

To accomplish this, our responsibilities include:

- Planning and response in Miami County
- Coordinating the Emergency Support Function (ESF) #8
- Utilization of the Health Alert Network (KS-HAN) & Everbridge Alert System
- Serving as the sub-grantee for the Centers for Disease Control and Prevention (CDC) and Health and Human Services (HHS) health preparedness grants
- Promotion of all-hazards planning
- Work closely with Local Emergency Planning Committee and community/regional partners, to regularly evaluate the Hazards Vulnerability Assessments and to conduct a variety of exercise scenarios relating to emergency preparedness



### Miami County Health Department

COVID-19 Testing Stats for 01/21/2022 Drive-Thru Clinic

TOTAL SPECIMENS COLLECTED: 164  
 SPECIMENS NOT DETECTED "NEGATIVE": 121  
 SPECIMENS DETECTED "POSITIVE": 43  
 POSITIVITY RATE FOR 01/21/22 CLINIC: 26.2%

In addition to offering COVID-19 testing, Miami County Emergency Management Coordinators distributed the following items:

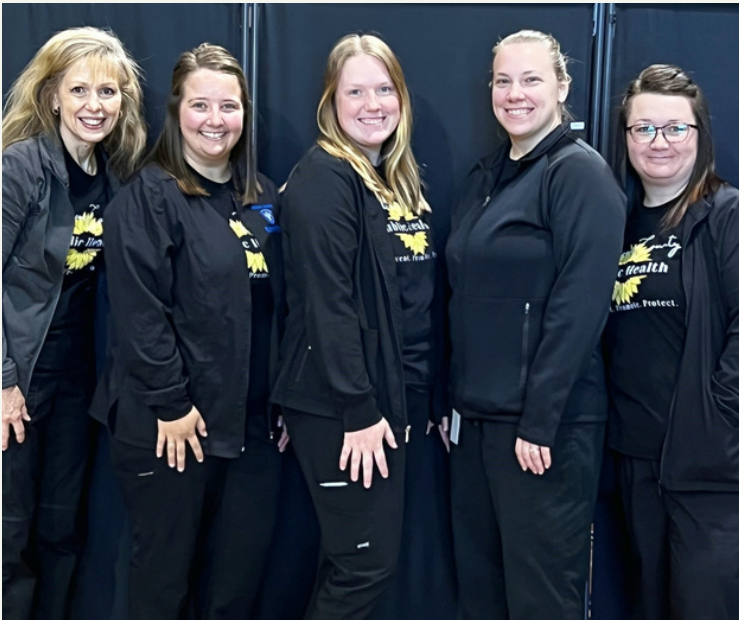
- 2000 KN-95 Masks
- 4000 Level 1 Adult Surgical Masks
- 1500 Pediatric Surgical Masks
- 25 Digital Thermometers
- 60 Bottles of Hand Sanitizer

We would like to say THANK YOU to Miami County Emergency Management, Miami County Sheriff's Office, Paola Police Department and Miami County Fair Board for their assistance with today's event. With the support from our partners we were able to provide necessary PPE and testing to the community.

# PUBLIC HEALTH LABORATORY

## CORE FUNCTIONS:

- ✔ Communicable disease surveillance, prevention, and control
- ✔ Integrated communicable disease data management
- ✔ Reference testing, specialized screening, and diagnostic testing
- ✔ Laboratory improvement and regulation (QI/QA)
- ✔ Outbreak and emergency response to communicable diseases
- ✔ Training and education of health care, academic, and public health workers



In 2022, MCHD's newly-expanded & CLIA-certified laboratory provided thousands of tests to residents of Miami County and surrounding areas.

# WOMEN, INFANTS & CHILDREN (WIC)



## BENEFITS

WIC Participants experience improved health through essential education and supplemental food assistance.



## PARTICIPANTS

Income eligible new and growing families to include:

- ☁ Pregnant women
- ☁ Postpartum women  
(up to one year after birth)
- ☁ Infants and children up to age five

## Local Impact

Participating Clients Received Benefits in 2022

WHO?	HOW MANY?
Women	125
Infants	108
Children	213



## WIC PROVIDES:

- ☁ Personalized nutrition information and support
- ☁ EBT card to buy healthy food
- ☁ Tips for eating well to improve health
- ☁ Referrals for services that can benefit the whole family
- ☁ Breastfeeding support
- ☁ Immunization screening and referral
- ☁ Nutrition and health classes

# ACADEMIC HEALTH DEPARTMENT

Miami County Health Department and the University of Kansas Medical Center, Department of Population Health created a partnership called the Academic Health Department, one of only a few in Kansas.

It is an academic-practice collaboration which effectively pools assets of both institutions.

## AHD GOALS:

The overall goal of an Academic Health Department is to address the basic conditions that affect the health of the community:

- ▶ Access to health services
- ▶ Mental health
- ▶ Nutrition
- ▶ Physical activity
- ▶ Poverty



## ILLUSTRATIVE ACCOMPLISHMENTS:

- ▶ Supported the successful planning and application of a Strategic Planning Retreat with the University of Kansas Public Management Center
- ▶ Completed communications project with the University of Kansas Medical Center Master of Public Health program to create a social media calendar specific to programmatic grant requirements
- ▶ Chronic Disease Risk Reduction program evaluation and support
- ▶ Facilitation and maintenance to the Health Coalition of Miami County
- ▶ Precepted two Master of Public Health students and hosted three nursing students for an eight-week population health rotation

## OUR WORK AHEAD:

- ▶ Produce and disseminate a formal Strategic & Communications Plan
- ▶ Receipt of the Kansas Department for Aging and Disability Services Suicide Prevention Grant
- ▶ Engage and mobilize community partnerships to address substance use, mental health access and connections to care for community members and for incarcerated individuals
- ▶ Program evaluation and recommendations to enhance services
- ▶ Engage in Community Health Strategist framework and build capacity to lead a multi-sector approach to health improvement strategies



# MATERNAL & CHILD HEALTH

Improving the well-being of Miami County's mothers, infants and children is an essential public health goal. Their well-being determines the health of the county's next generation and helps predict future public health challenges for families, communities, and the healthcare system.

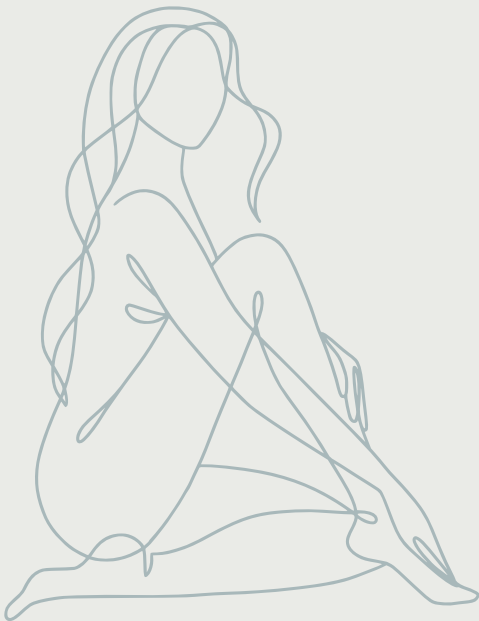
85%

OF PRENATAL CARE BEGAN IN THE FIRST TRIMESTER FOR MIAMI COUNTY RESIDENTS



## WOMEN'S HEALTH CARE:

- Pap Smears
- Pelvic & Breast Exams
- Physical Exams
- Pregnancy Tests
- Prescriptions & Refills
- STD/STI Testing & Treatment



## HOME VISITING SERVICES:

Home visiting is a free, voluntary program that brings a trained professional to help at convenient times for you and your family. Home visitors provide education, initiate referrals, and assist mothers and families in accessing community systems of care.

## SPECIAL HEALTH CARE NEEDS:

Provides care resource coordination for infants, children, and youth up to age 21 who have eligible medical conditions, and to persons of all ages with specific metabolic or genetic conditions.

## KAN-BE-HEALTHY SCREENING:

A Kan-Be-Healthy screening is for children, teenagers and young adults. Everyone who is age 21 or younger, and has Kansas Medicaid coverage can take part in the program.

### WHAT SCREENINGS ARE COVERED?

- Vision
- Dental
- Hearing
- Medical

## SAFE SLEEP TRAINING:

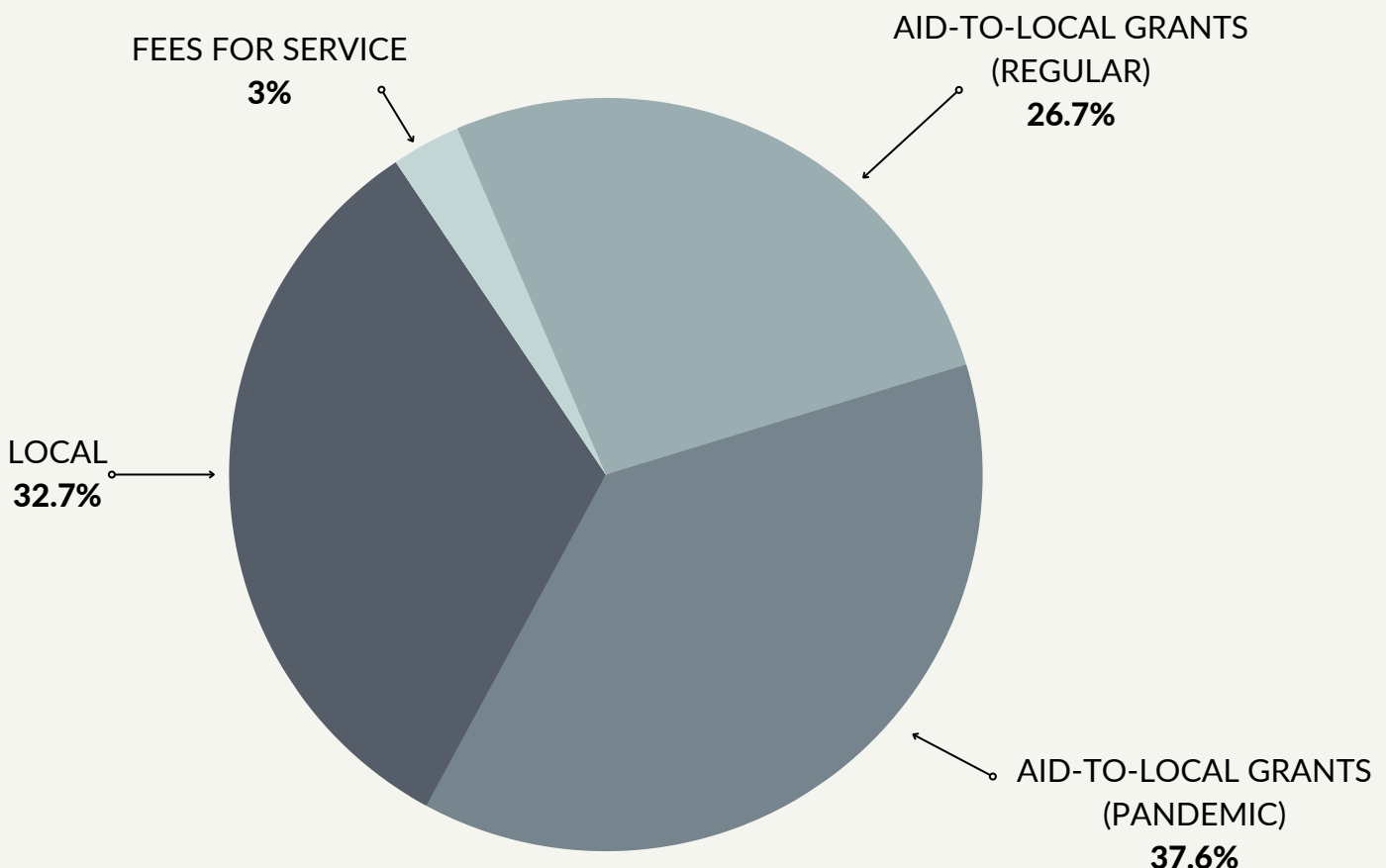
A Safe Sleep Instructor, who is certified with the Kansas Infant Death and SIDS Network, offers free, safe sleep training, education and resources.


# FINANCIAL REPORT

## RESTRUCTURING FOR RESILIENCY

We continue to practice responsible fiscal management to provide the best services for Miami County residents and visitors; as a result, the fiscal condition of the health department remains stable. The gap in funding and public health structure overall, especially when addressing the root causes of poor health outcomes, led to an increased focus on supporting local public health from all levels of government. MCHD has worked diligently to improve the health department infrastructure and to enhance departmental capacity through the procurement of updated equipment and supplies. In doing so, the building is better equipped to accommodate staff and visitors, as well as work place flexibility. The enhancements have allowed for increased appointment availability along with the expansion and addition of services offered.

Annually, MCHD undergoes a budgetary audit to ensure fiscal practices align with the accepted accounting principals for governmental entities and public law. Our department remains in compliance with state and federal grant reporting for the expenditure of funds allocated.





**This report contains a high-level overview of the activities and accomplishments of Miami County Health Department for the year ended December 31st, 2022. This report is provided to Miami County elected officials and to the citizens of Miami County, Kansas.**



Find us!



[www.miamicountyks.org](http://www.miamicountyks.org)